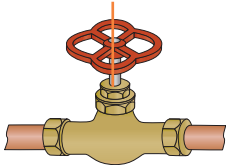


Water services

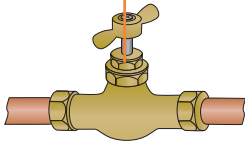
- 1 Service valve won't open or shut properly



- 2 Gate valve won't open or shut properly

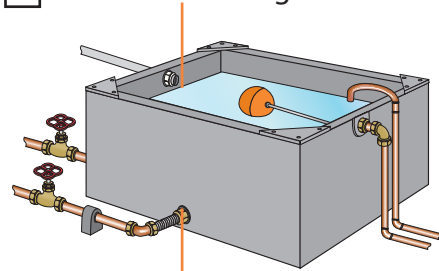


- 3 Stopcock won't open or shut properly

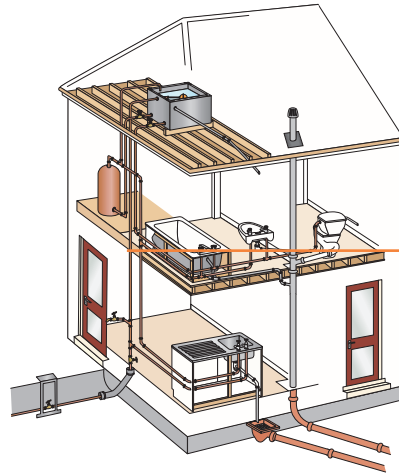


What is the fault and its number?

- 4 Tank is overflowing



- 5 Tank is leaking



- 6 Knocking sound from pipes

- 7 Water pipe is leaking

- 8 Water pipe has burst